

# OPERATING SPECIFICATIONS

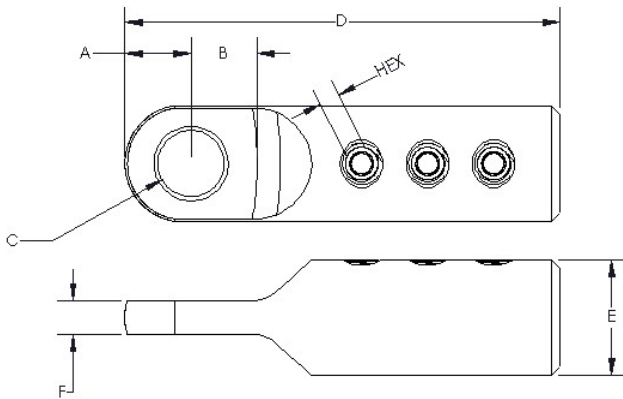
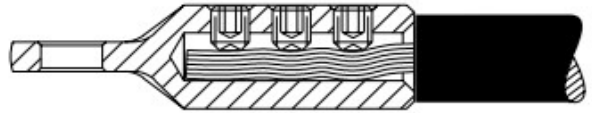
## **DCD** Design & Manufacturing Ltd.

### SERIES 24500 MINIGRIP

#### Mini-Grip™

The Mini-Grip™ pulling eye is reusable and has a lug style head that will attach directly into a line swivel or other type of connector. This pulling eye is zinc plated for corrosion and has three set screws that clamp directly onto the cable conductor. It is suitable for smaller cables with conductors having seven strands or less.

Note: These pulling eyes should always be used with a Line Swivel (00505 series).



Part Number	Maximum Cable Size	Maximum Core Diameter	A	B	C	D	E	F	Hex Key	Net Weight
24500-343	4 to 3 AWG	0.33" 8.4 mm	7/16" 11 mm	1/2" 12.7 mm	7/16" 11 mm	3-5/32" 80 mm	3/4" 25 mm	1/4" 6.3 mm	5/32"	0.3 lb 0.59 kg
24500-406	2 to 1/0 AWG	0.39" 9.9 mm	1/2" 12.7 mm	1/2" 12.7 mm	1/2" 12.7 mm	3-9/32" 83 mm	7/8" 22 mm	1/4" 6.3 mm	5/32"	0.37 lb 0.59 kg
24500-562	2/0 to 4/0 AWG	0.55" 15.0 mm	7/16" 11 mm	1/2" 12.7 mm	7/16" 11 mm	3-11/32" 85 mm	1" 25 mm	1/4" 6.3 mm	5/32"	0.44 lb 1.0 kg

Dimensions and weights subject to change without notice.

# OPERATING INSTRUCTIONS



**Design &  
Manufacturing Ltd.**

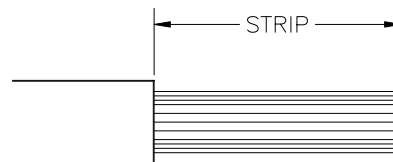
## SERIES 24500 MULTIPLEX PULLING EYE



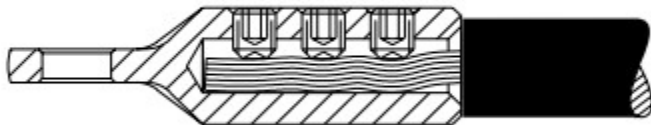
### INSTALLATION

1. Strip back the cable jacket and insulation to the length indicated in the following table.

Pulling Eye	Strip Length
24500-343	2"
24500-406	2"
24500-562	2"



2. Insert the cable into the pulling eye.



3. Tighten the three set screws which secure the cable.

### SAFETY



1. Never use a worn, defective or incomplete component. Ensure that all components of the pulling system are able to withstand the maximum pulling loads. Components not rated for the pull force may break and release the stored energy of the pull.
2. Any attempt to modify the Mini Grip will void the warranty and may result in property damage, severe bodily harm, or death.

3. Be prepared for the unexpected. Use recognized safety practices and wear recognized safety equipment.

### SERVICE



1. After each use, assess the condition of the Mini Grip, checking for wear and external damage.