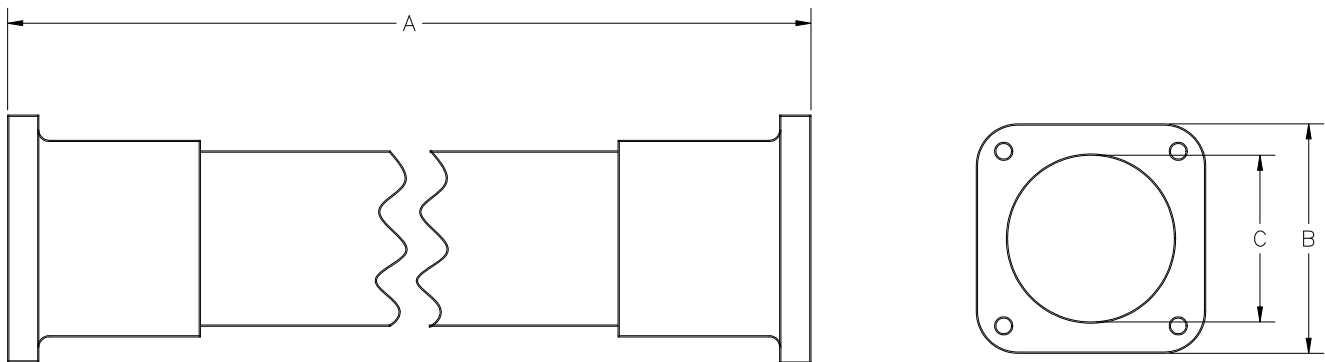


OPERATING SPECIFICATIONS

DCD Design & Manufacturing Ltd.

SERIES 32600 FLEXIBLE CABLE GUIDE

- The flexible cable guide is used in conjunction with series 32610 cable entry cone and series 32620 duct entry adapter for guiding a cable into the entrance of a conduit.

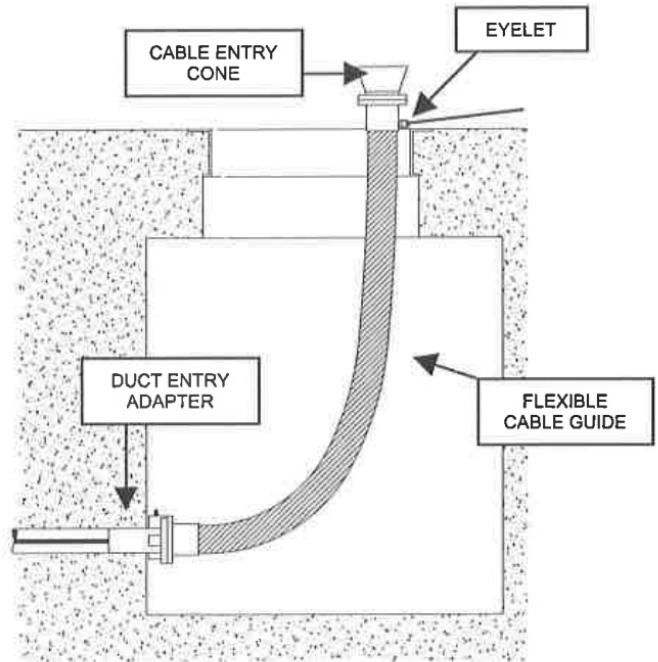


Part Number	A	B	C	Minimum Bend Radius	Net Weight
32600-400	AS REQ.	5-1/2" 140 mm	4" 100 mm	4" 102 mm	NA
32600-405	60" 1520 mm	5-1/2" 140 mm	4" 100 mm	4" 102 mm	19.5 lb 8.8 kg
32600-410	120" 3050 mm	5-1/2" 140 mm	4" 100 mm	4" 102 mm	27 lb 12.3 kg
32600-500	AS REQ.	6-1/2" 165 mm	5-1/4" 135 mm	5" 127 mm	NA
32600-505	60" 1520 mm	6-1/2" 165 mm	5-1/4" 135 mm	5" 127 mm	20 lb 9.1 kg
32600-510	120" 3050 mm	6-1/2" 165 mm	5-1/4" 135 mm	5" 127 mm	28 lb 12.7 kg
32600-600	AS REQ.	7-1/2" 190 mm	6" 150 mm	9.2" 234 mm	NA
32600-605	60" 1520 mm	7-1/2" 190 mm	6" 150 mm	9.2" 234 mm	21 lb 9.5 kg
32600-610	120" 3050 mm	7-1/2" 190 mm	6" 150 mm	9.2" 234 mm	36 lb 16.3 kg

- Dimensions and weights subject to change without notice.
- Uses rubber hose.
- Tensile strength of rubber 16Kgf min.
- Resistivity: 10⁷-10⁹ Ohms.
- Drop impact test 120 lb at 10ft: No cracks, 3 times.

INSTALLATION

1. Select the duct entry adapter (series 32620) to suit the duct size and attach to one end of flexible cable guide.
2. Attach additional cable guides as required to reach top of manhole.
3. Attach cable entry cone (series 32610) to end of flexible cable guide.
4. Secure flexible cable guide using ropes and eyelet provided.



SERVICE



1. Never use a worn, defective or incomplete component. Ensure that all components of the pulling systems are able to withstand the maximum pulling loads. Components not rated for the pull force may break and release the stored energy of the pull.
2. Be prepared for the unexpected. Use recognized safety practices and wear recognized safety equipment.

SERVICE



There are no replacement parts available for this product.